

## **KICKBALL TOURNAMENT DETAILS**

**Tournament Date:** Saturday, June 18 2022 10:00AM-2:00PM **Rain Date:** Sunday, June 19 2022

**Location:** Sullivan Field, Suffield CT

**Event Directors:** DJ Viglione, Jennifer Viglione, Daniel Leonard, [dleonard@suffieldct.gov](mailto:dleonard@suffieldct.gov)

### **What is kickball?**

Kickball is similar to baseball – the ball is kicked rather than struck with a bat. The player comes to “bat” by kicking ball that the pitcher rolls toward home plate. The pitcher rolls the ball towards the catcher, the “batter” kicks it with his/her foot, then runs to first base, becoming a runner.

### **Rosters**

- Max of 12 per team.
- 10 players on the field at once while playing defense.
- Roster may be Co-ed

### **Coaches**

Each team is allowed to have a first and third base coach on the field.

### **Playing Field**

A kickball field is similar to a softball field. The infield is diamond-shaped and each of the baselines is generally 60 feet long. The pitching strip is about 42 feet from home plate. The strike zone is considered to be across home plate, 1 foot high and 1 foot on either side of the plate. Each team must field between eight and 10 players.

There is an imaginary line between first and third base that fielders and the pitcher must stay behind until the ball is kicked.

### **Kicking**

Must stay in same kicking order throughout the game. Entire roster must be in a kicking order.

Example: If you have 12 players on your team, players will kick 1-12 then repeat the lineup. Regardless of anyone not playing in the field that inning.

- 3 strikes and you're out.
- Missed kick is a strike.

- Foul ball is a strike. Definition of foul ball: - kicked ball landing in foul territory - kicked ball touched in foul territory - kicked ball landing in fair territory but touching foul territory on its own at any time before reaching first or third base

- You can get out on a foul ball.

- No balls/no walks.

- Bunting is allowed.

- Any attempt at a kick is a kick.

Game Length: 4 Innings OR 30 minutes whichever comes first.

(Duration subject to change based upon number of registrations)

- No new innings started with 5 minutes left.

- 10 run inning rule.

- If ten runs are scored in a half inning, the half inning is over

### **Miscellaneous Rules**

- Pitches must be rolling, not bouncing. All pitches must be thrown underhand.

- No stealing or leading off until ball is kicked.

- A runner cannot force the ball to hit their head.

- There are only in the park homeruns, ie. no homerun fence.

- There is only one referee per game – please respect calls of official. All calls are final.

### **Outs**

- If the ball is caught in the air without touching the ground first, then the batter is out (a fly out).

- A defensive player with the ball touches the base ahead of a runner who is forced to go to that base, because of an advancing runner behind him (a force out).

- A defensive player touches the runner directly with the ball while holding it (a tag out).

- A defensive player may throw the ball and hit the runner on the fly with it.

- No headshots. Headshots will not count as an out.

- If a throw goes out of bounds, each base runner moves up one base.

- An infield fly rule will be in play.

## **Scoring**

- Teams score a run when a player safely runs around all four bases and touches home plate. A player can safely get on base by kicking the ball without recording an out or by getting pitched four called balls. A ball is a pitch that does not pass through the strike zone and that is deemed to be a ball by the umpire.

## **Tie**

Overtime Rule:

- If the score is tied after the fourth inning or 30 minutes have passed, one more inning will be played.

# DIAGRAM 1: FIELD OVERVIEW

HR = Home Plate Referee  
1R = 1st Base Referee  
3R = 3rd Base Referee

1BC = 1st Base Coach  
3BC = 3rd Base Coach  
BK = Backstop

K = Kicker  
C = Catcher  
P = Pitcher

*(All Referee, Coach and Player positions are suggestions for demonstration purposes)*

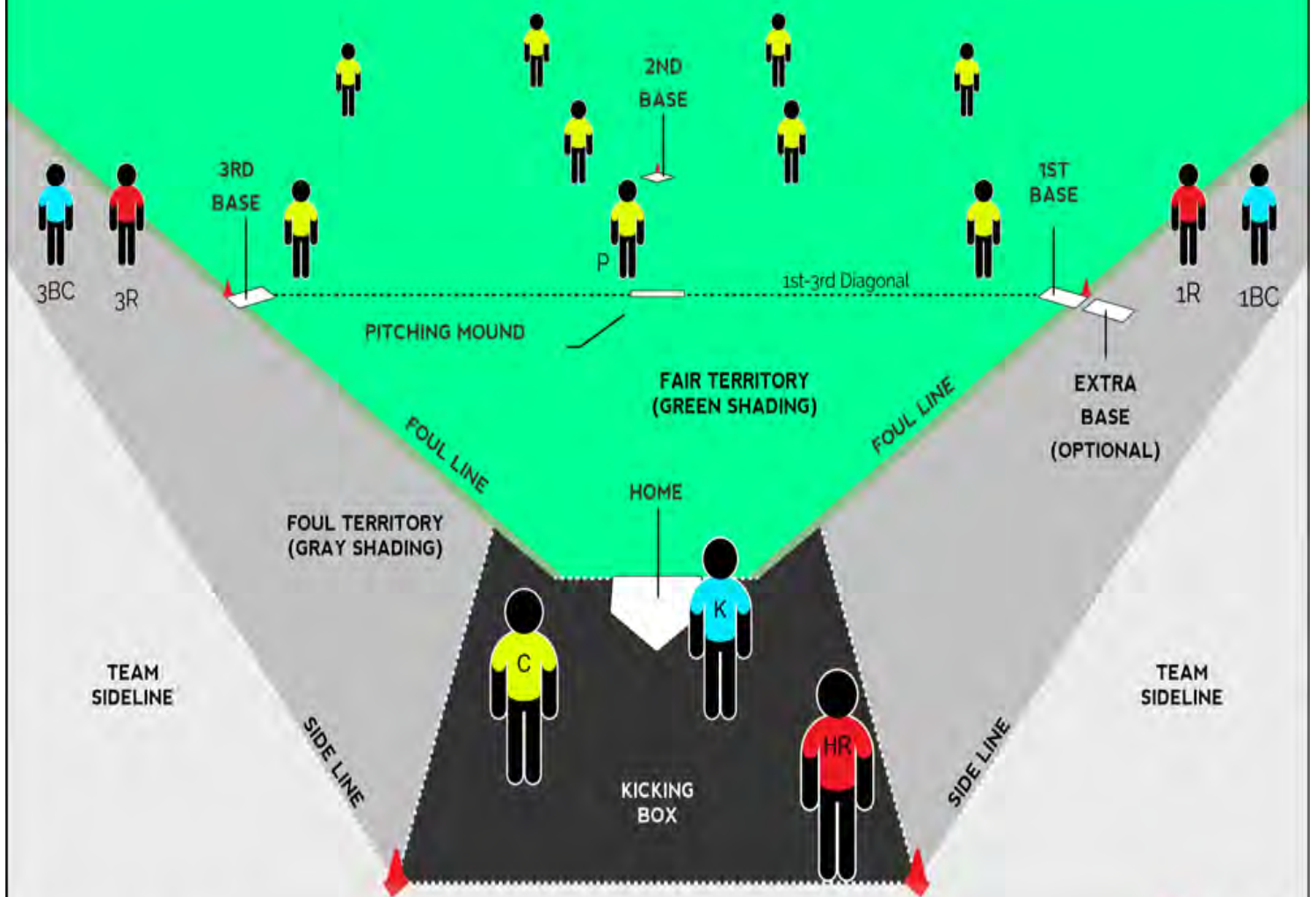
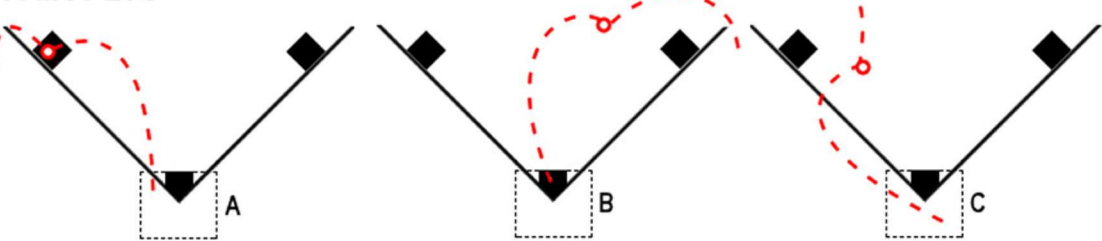
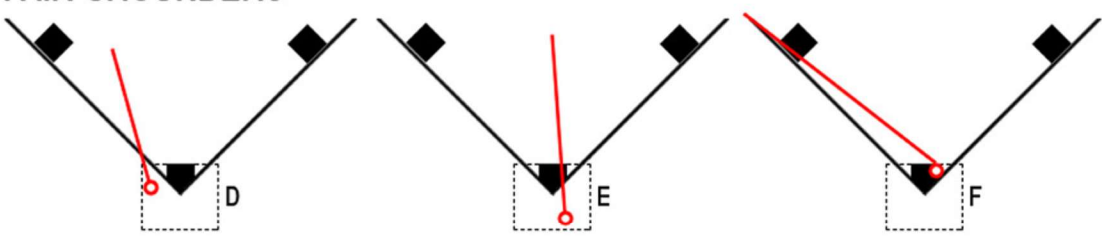


Diagram 3  
WAKA Kickball Fair and Foul Examples

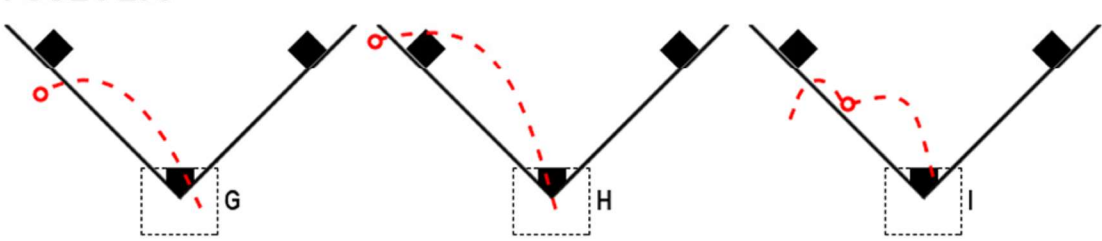
**FAIR FLYS**



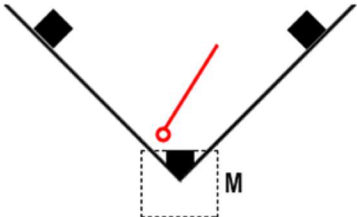
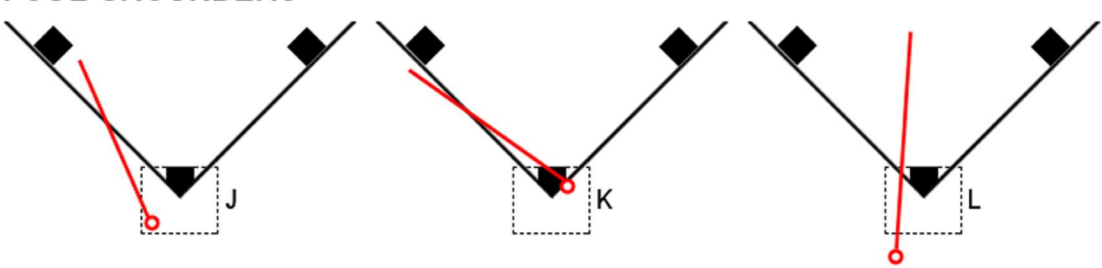
**FAIR GROUNDERS**



**FOUL FLYS**



**FOUL GROUNDERS**



Path of ball in the air	- - -
Path of ball on the ground	—
First ground contact point	○
<b>LEGEND</b>	